

Ergonomic Office Solution

FREE YOUR WORKING SPACE

MODERNSOLID

CPU Holder/Notebook Drawer/Accessories

Ergonomic Office Solution
FREE YOUR WORKING SPACE

CPU
Holder



Cable
Manager



ERGONOMIC

2017



Notebook
Drawer



VESA
Mount
Adapter

MODERNSOLID INDUSTRIAL CO., LTD.

NO.11-2, Wu Nan Rd., Wu Chi Dist., Taichung City 435, Taiwan.
TEL: 886-4-26397717 / 886-4-26398669 (Rep.) / FAX: 886-4-26398333
Website: www.modernsolid.com / E-mail: info@modernsolid.com.tw



modernsolid.com

MODERNSOLID

www.modernsolid.com

Company Profile



MODERNSOLID, an ISO 9001 approved manufacturer, supplies since 1988 a wide range of Mounting Solutions that accommodates large and small displays for office, education, industrial, and healthcare market, etc.

As an awarded innovative company, **MODERNSOLID** keeps on top of the latest market trends and research in the technology field, and is dedicated to helping our partners find the best solution. We offer an entire range of products tailored to any market opportunities.

We support our customers in growing their business with innovative, high quality engineering products and years of manufacturing experience. Contact us and let us support your growing business with **MODERNSOLID**-Products!

Contents

Ergonomic Office Solution

03	VESA Mount Adapter
04	Tool Rail Accessories Universal Slat Mount Bracket Post Arm
07	Notebook Drawer
08	Pencil Tray
09	CPU Holder Mini CPU Holder Under-desk Mount Clamp Mount CPU Stand Under-desk Mount with Strap
13	Cable Manager Vertical Cable Manager Horizontal Cable Manager

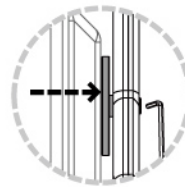
VESA

Mount Adapter

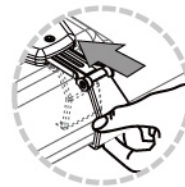


► VESA Mount Adapter for LED Monitors

- Features a lightweight and streamlined design
- Fits 19"-24" LED Monitors
- Helps LED Monitors to be used with various mounting solutions for ergonomic benefits
- Connects any VESA-compliant mounting solution with a 75 mm x 75 mm attachment
- LED Monitors easily snaps into holder on the three corners for secure placement



• Adjust the circular piece between the OP-035 bracket and monitor to achieve a tight fit.



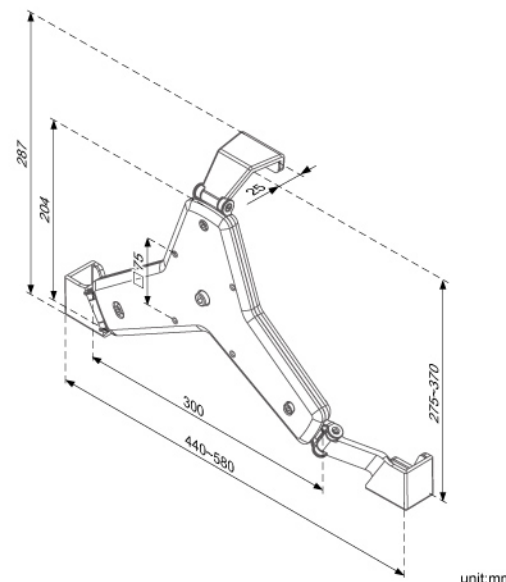
• Adjust the clamps to fit monitor size.



• The OP-035 is designed with a 75 x 75mm VESA hole pattern.



OP-035
max ~15kg (33lbs)



unit:mm

Tool Rail

Accessories



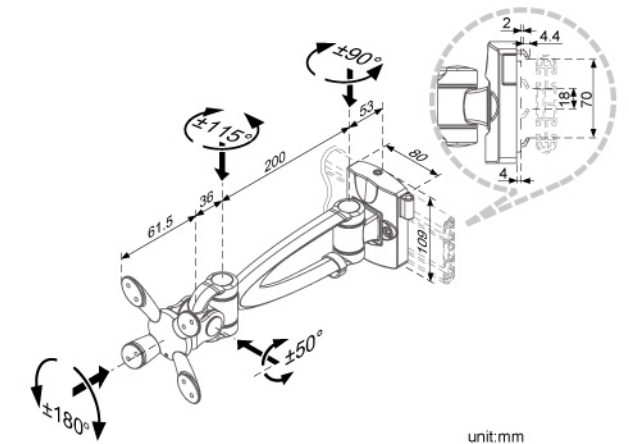
► Universal Slat Mount Bracket

- Save the working space.
- Encourage the user to place the monitor in a comfortable viewing position when in use.
- Apply to the tool rail with groove in width of 18~70 mm and min. depth of 4.4 mm.

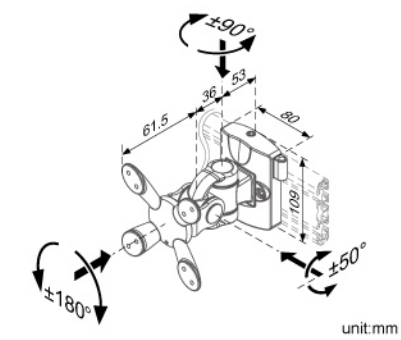


LA-69-2
VESA 75/100mm
max ~10kg (22lbs)

LA-69-3
VESA 75/100mm
max ~12kg (26.4lbs)



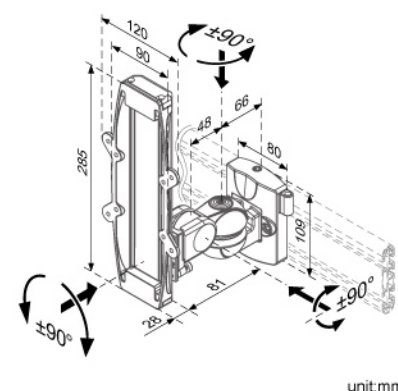
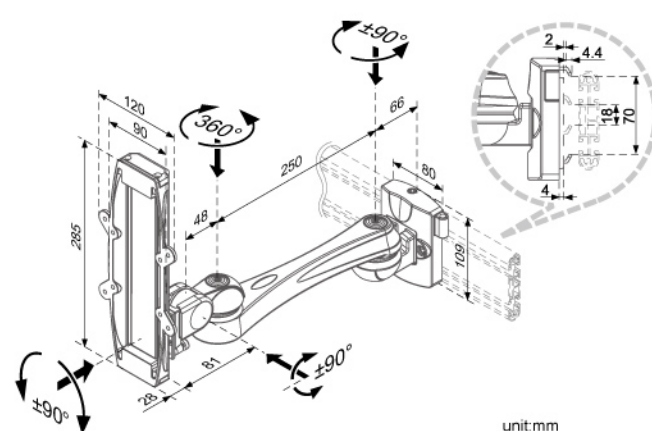
unit:mm



unit:mm

► Universal Slat Mount Bracket

- The special mechanism design for lift and descent makes the height of the monitor be adjusted easily (height adjustable range: 170mm), when the monitor arm is fixed on the tool rails.
- Apply to the tool rails with groove in width of 18~70 mm and min. depth of 4.4 mm.
- If 100X100mm VESA Adapter Plate is applied, please deduct 0.5 kg (1.1 lbs) from original loading weight.

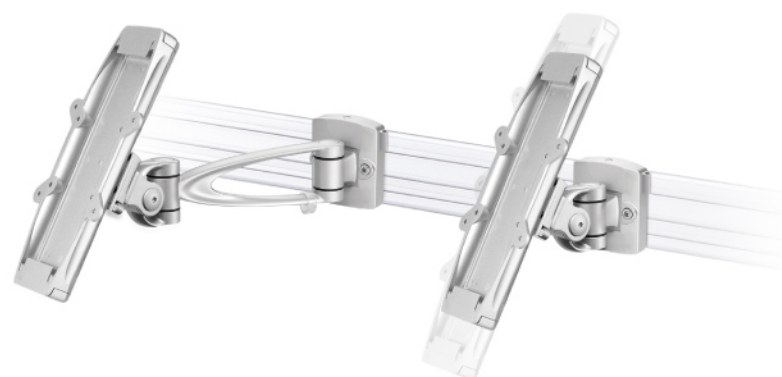


LA-59-2TN6

VESA 75/100mm
max 4~6 kg / 8.8~13.2 lbs

LA-59-3TN6

VESA 75/100mm
max 4~6 kg / 8.8~13.2 lbs



LA-69-2TN6

VESA 75/100mm
max 4~6 kg / 8.8~13.2 lbs

LA-69-3TN6

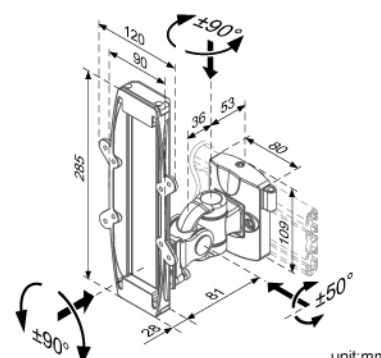
VESA 75/100mm
max 4~6 kg / 8.8~13.2 lbs

LA-69-2TN8

VESA 75/100mm
max 5.5~7.5 kg / 12.1~16.5 lbs

LA-69-3TN8

VESA 75/100mm
max 5.5~7.5 kg / 12.1~16.5 lbs

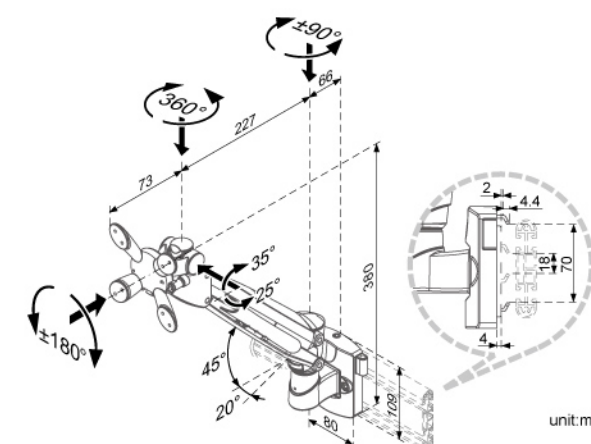


► Universal Slat Mount Bracket



LA-993

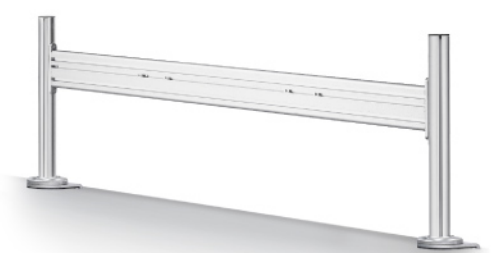
Gas Spring inside
VESA 75/100mm
max 4~9 kg / 8.8~19.8 lbs



► Post Arm

- Material of main body: aluminum plated.
- Position of slot is adjustable to various height.
- Complete with cable organizer on the rear to neatly route cables.

- Store up to 6 x Ø8 mm cables.
- Clamp Type: Suits any thickness desks from 15~85mm.



PA-101A

max ~36 kg (79.2 lbs)

Steady Increase



PA-102A

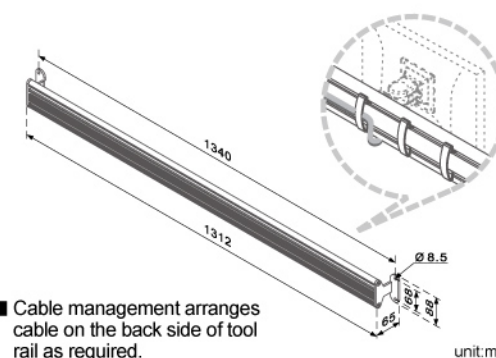
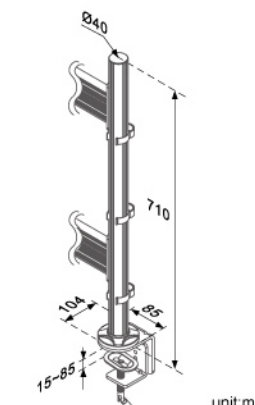
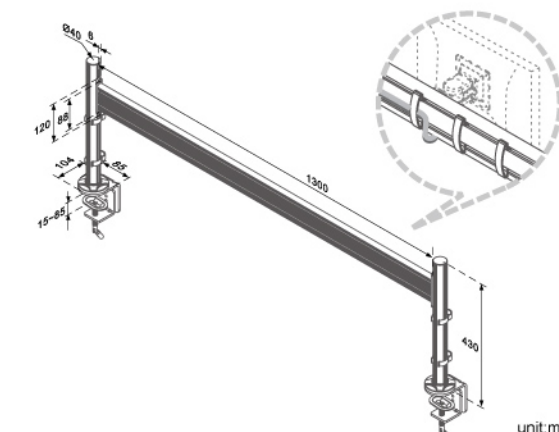
max ~50 kg (110 lbs)



PA-103A

max ~36 kg (79.2 lbs)

Wall Mount Type: Secured to solid wall.



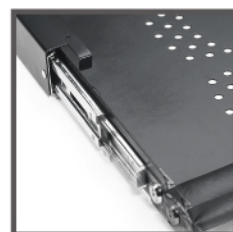
- Cable management arranges cable on the back side of tool rail as required.

Notebook Drawer

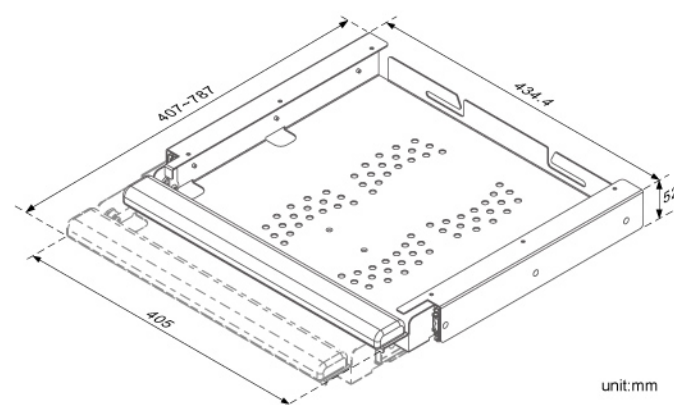


► Notebook Drawer

- Secure your Notebook with a safe lock
- Wrist rest provides comfort and support with quality cushion
- Three-fold sliding-track makes the drawer slide smoothly and stably
- Allow ventilation with perforated base while operating



ND-01
~15.4"
max ~5 kg (11 lbs)



Pencil Tray



► Pencil Tray

- Organize your cluttered desktop by fixing the tray underside of the desk
- Provide storage for pens, rubber bands, paper clips, Memo pad, etc.
- Pull-out function offers quick access to the writing utensils stored inside
- Push the tray inward under the desk when not in use



White

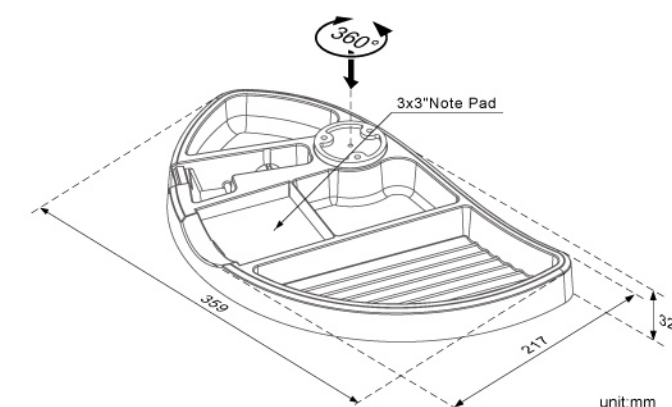


Black

OP-301



3x3"Note Pad



CPU Holder

▶ Mini CPU Holder

- Mount CPU vertically under the desk to save the space.
- Adjust the height and width to fit different CPU by using the handle.
- Ideal CPU size: adjustable width from 50~100mm & height from 200~358mm.



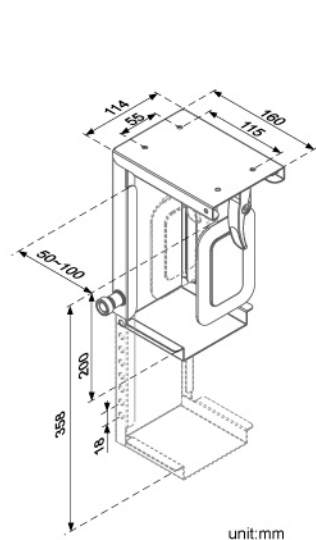
CS-50
Standard



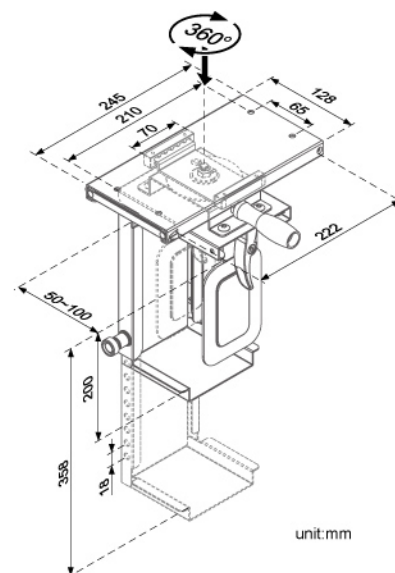
CS-51
Slide / Swivel



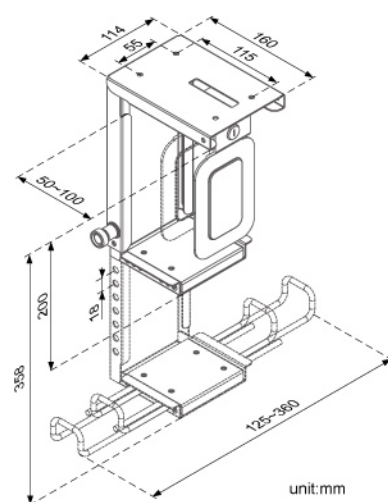
CS-52
Key Lockable



unit:mm



unit:mm



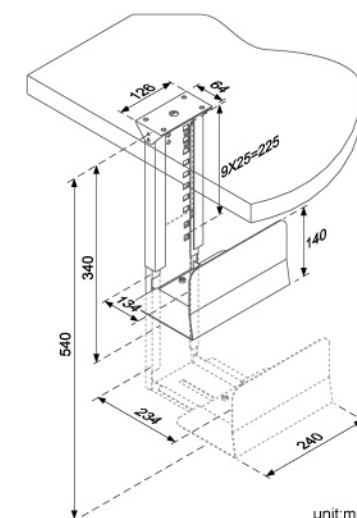
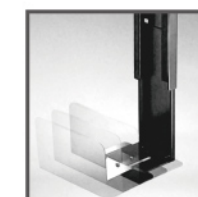
unit:mm

▶ Under-desk Mount

- Mount the CPU Holder underneath the desk to save space
- Sturdy design keeps the CPU safe in position
- User-friendly features help users install and operate easily



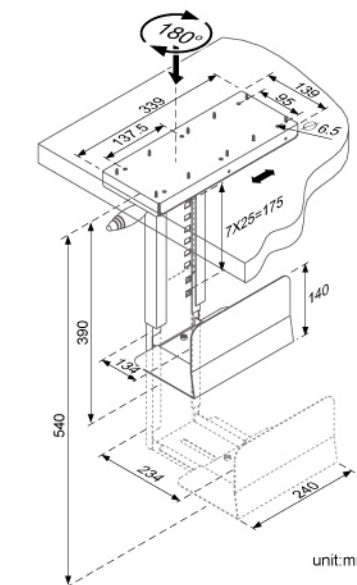
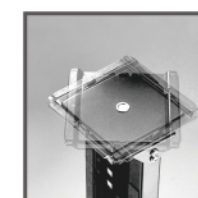
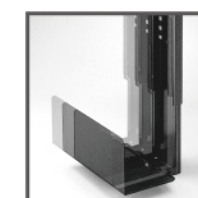
CS-10
Standard



unit:mm



CS-11
Slide / Swivel
It not only moves forward/backward within 150 mm, but also swivels left & right total 180°.



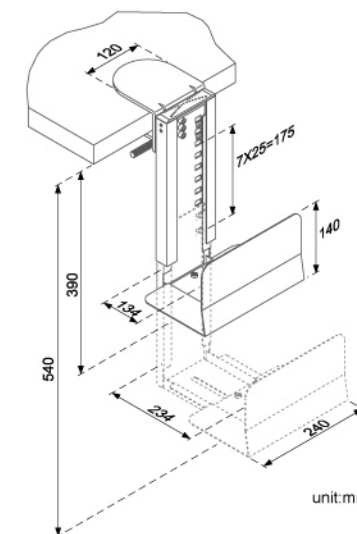
unit:mm

▶ Clamp Mount

- Easily Clamp the CPU to a desk (thickness 15-102 mm)



CS-12
Desk-Clamp



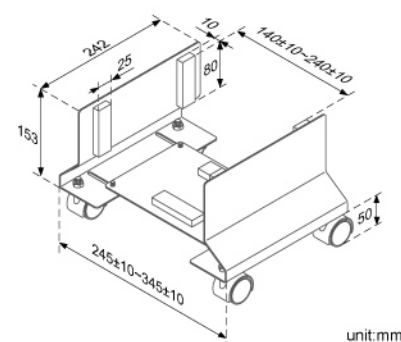
unit:mm

▶ CPU Stand

- Elevate CPU off the floor.
- Solid Steel Structure, thickness 2 mm.
- Adjustable width from 5 1/8" to 10" to securely hold CPU.
- Thick foam pads cushion CPU and protect surface from scratches.
- With 4 rolling castors.



CS-02



▶ Under-desk Mount with Strap

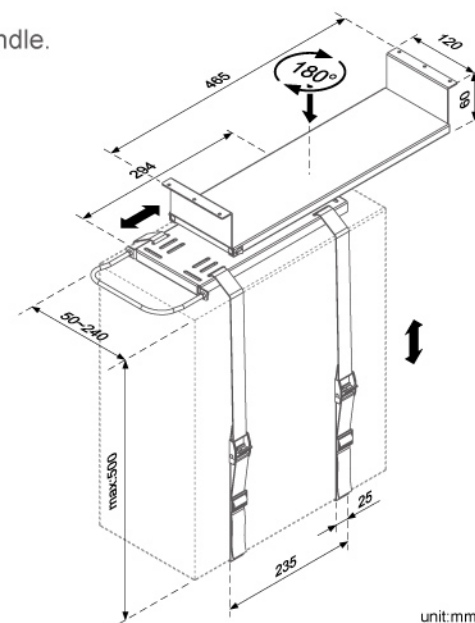
- Mount the CPU Holder underneath the desk to save space
- Support the CPU with High tensile-strength straps securely
- Extend and swivel the CPU for convenient use of rear connections.
- Adjust the CPU forward/backward and left/right easily by using the handle.



CS-35
Slide / Swivel

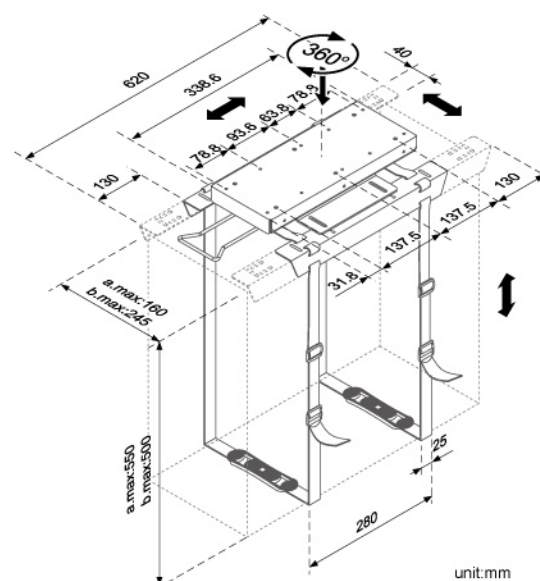
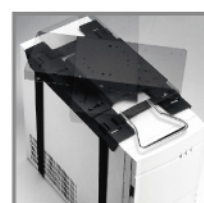
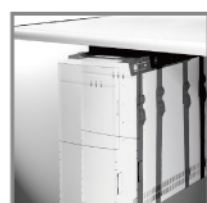
max ~20 kg (44 lbs.)

Straps accommodate a variety of CPU sizes:
CPU width from 50~240mm & height up to 500mm.



CS-23
Slide / Swivel

max ~20 kg (44 lbs.)



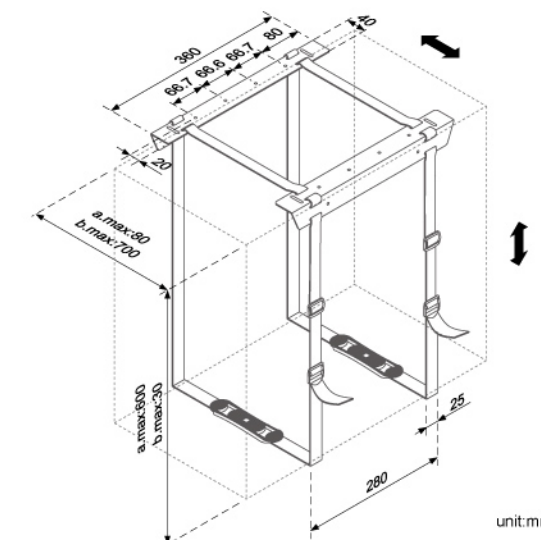
▶ Under-desk Mount with Strap

- Mount the CPU Holder underneath the desk to save space
- Support the CPU with High tensile-strength webbing length 1680mm.



CS-21
Standard

max ~20 kg (44 lbs.)

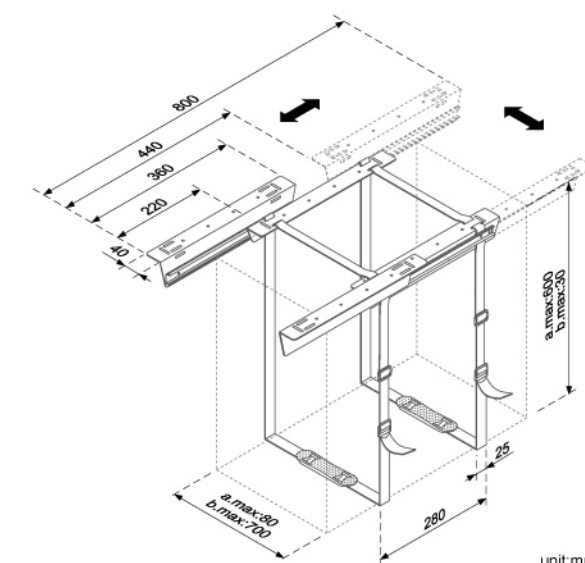
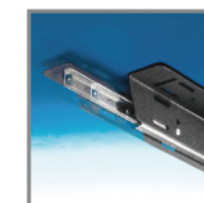


- Straps accommodate a variety of CPU sizes:
- a. CPU maximum width of 80 mm maximum height at 600 mm.
- b. CPU maximum width at 700 mm maximum height at 30 mm.



CS-22
Slide

max ~20 kg (44 lbs.)



-

Technical drawing of a vertical spiral staircase. The drawing shows a side view of the staircase with a total height of 910 mm. The top landing has a diameter of 165 mm and a width of 31 mm. The spiral has a pitch of 45.5 mm and a width of 57 mm. The base has a diameter of 165 mm and a width of 31 mm. The unit is mm.

Black

Grey

White

